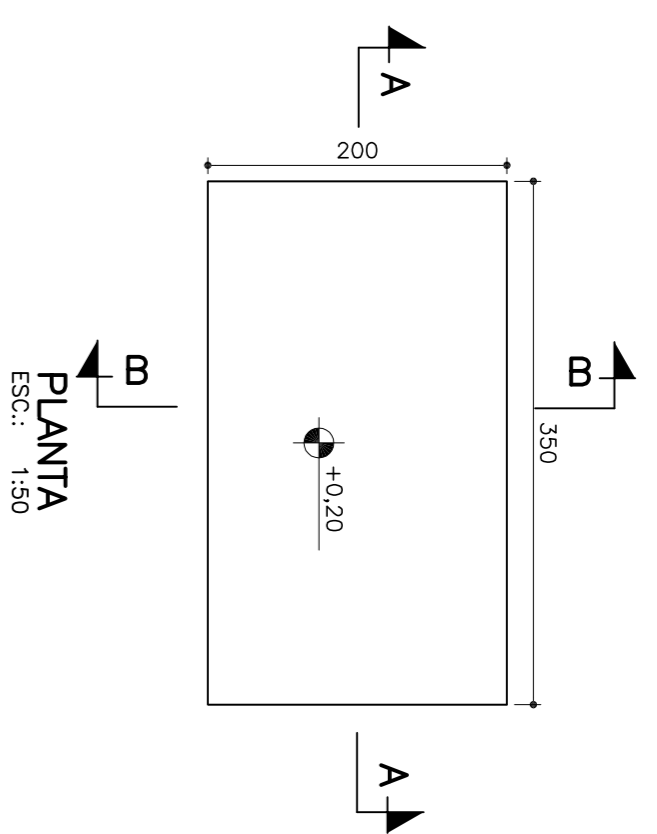


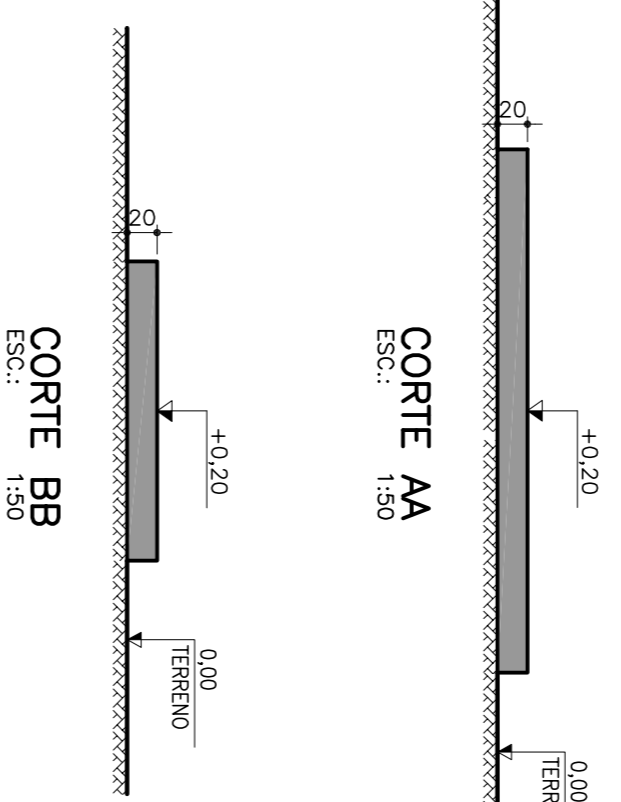
BASE DO ABRANDADOR

FORMA

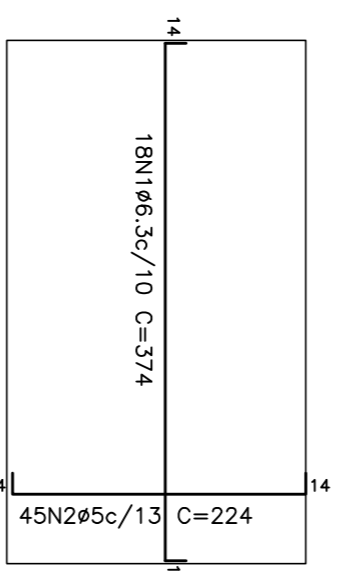


PLANTA
ESC.: 1:50

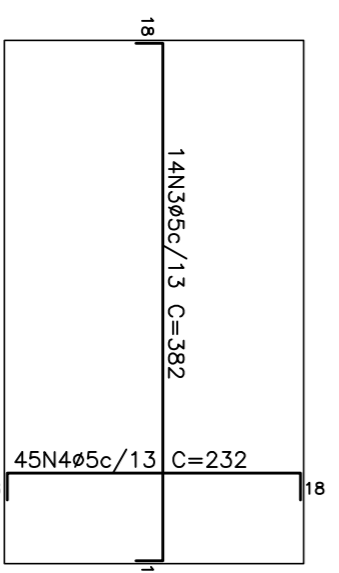
CORTE AA
ESC.: 1:50



ARMAÇÃO



ARMAÇURA POSITIVA
ESC.: 1:50

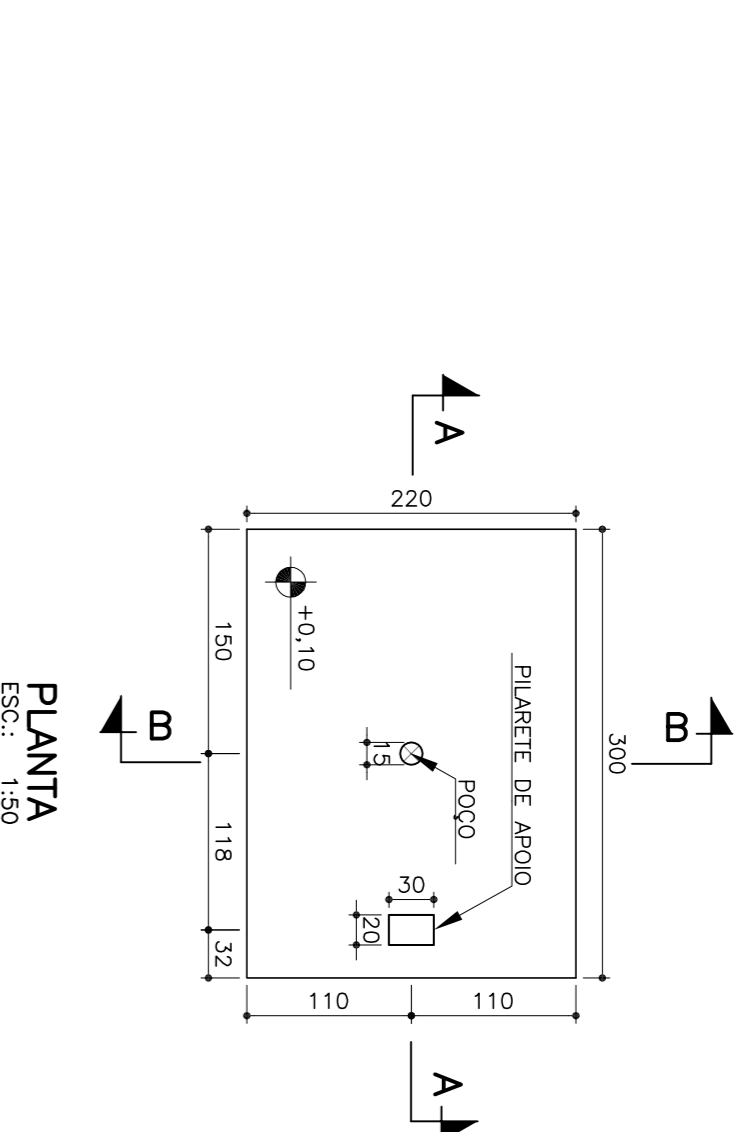


ARMAÇURA NEGATIVA
ESC.: 1:50

Elemento	Pos.	Diam. Ø (cm)	Dist. (cm)	Relevo (cm)	Dist. (cm)	Comp. (cm)	Total (cm)	CA-50 (kg)	CA-60 (kg)
ARMAÇURA POSITIVA	1	18	14	348	14	372	8732	16,5	
	2	45	14	196	14	224	10080	18,2	15,8
ARMAÇURA NEGATIVA	3	18	14	348	18	382	8876	17,4	10,8
	4	45	18	196	18	232	10440	11,9	16,4
Total+10%:							18,2	18,0	
ES:							0,0	47,6	
ES:							18,2	0,0	
ES:							18,2	47,6	

LAJE DO POÇO

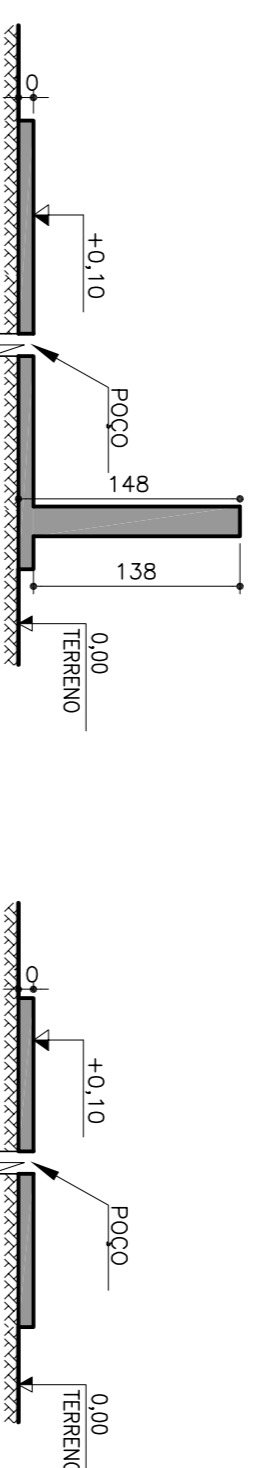
FORMA



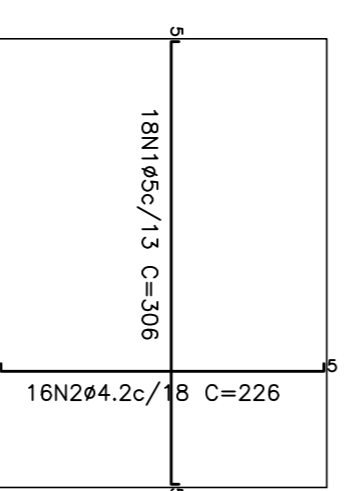
PLANTA
ESC.: 1:50

CORTE AA
ESC.: 1:50

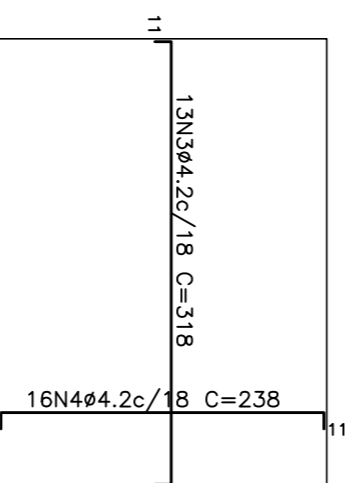
CORTE BB
ESC.: 1:50



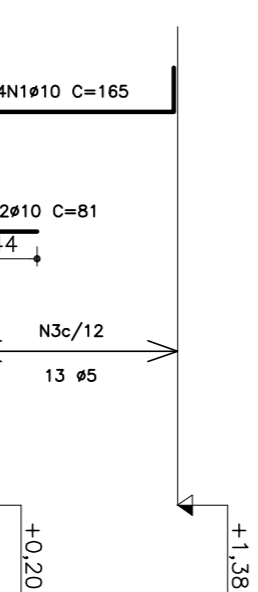
ARMAÇÃO



ARMAÇURA POSITIVA
ESC.: 1:50



ARMAÇURA NEGATIVA
ESC.: 1:50

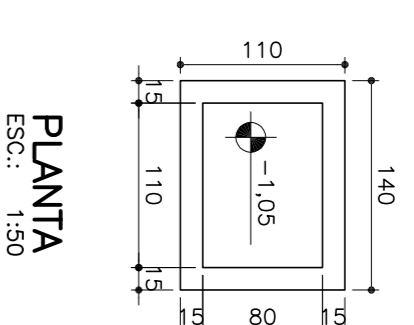


PILALETE DE APOIO
ESC.: 1:50

Elemento	Pos.	Diam. Ø (cm)	Dist. (cm)	Relevo (cm)	Dist. (cm)	Comp. (cm)	Total (cm)	CA-60 (kg)
ARMAÇURA POSITIVA	1	18	5	296	5	306	5508	8,6
	2	18	5	296	5	306	5508	8,6
ARMAÇURA NEGATIVA	3	18	11	296	11	318	4134	4,3
	4	18	11	296	11	318	4134	4,3
Total+10%:							4,6	4,6
ES:							13,9	13,9
ES:							2,31	2,31

CAIXA DE MANOBRA

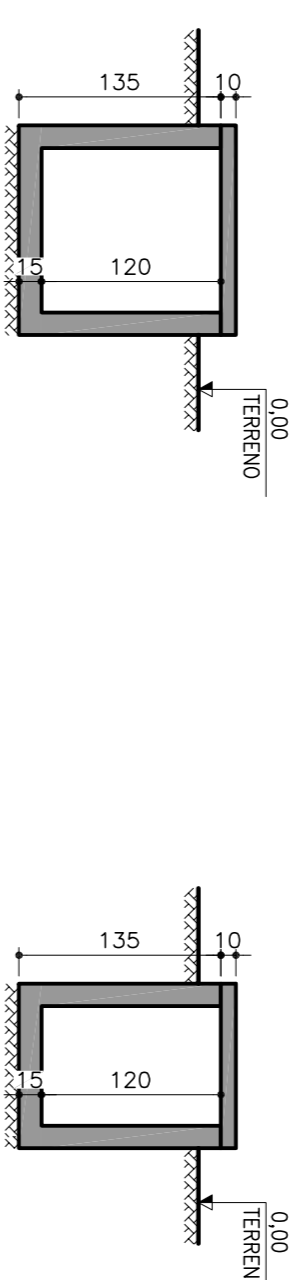
FORMA



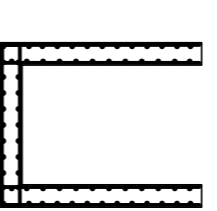
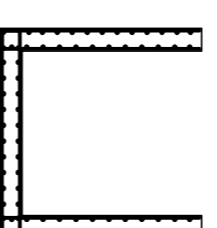
PLANTA
ESC.: 1:50

CORTE AA
ESC.: 1:50

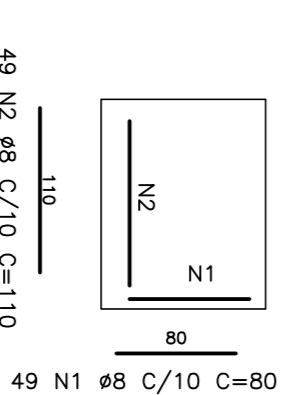
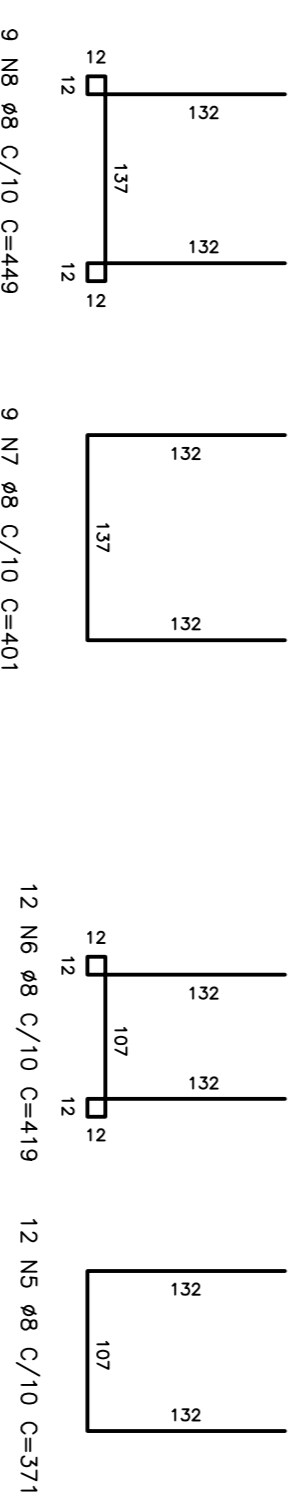
CORTE BB
ESC.: 1:50



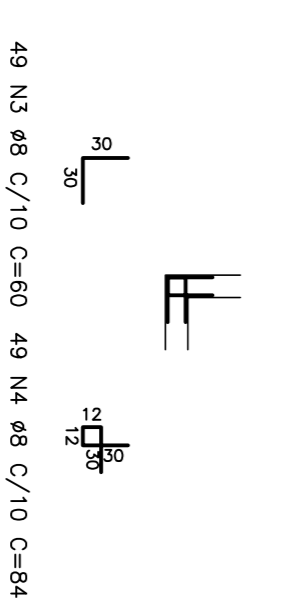
ARMAÇÃO



PAREDES
ESC.: 1:50



LAJE DE FUNDO E TAMPA
ESC.: 1:50



REFORÇO DAS PAREDES
ESC.: 1:50

Elemento	Pos.	BL.	Q.	Comp. (cm)	Total (kg)	CA-50A (kg)
CAIXA	1	49	49	80	3920	15,39
	2	49	49	110	5390	21,16
DE MANOBRA	3	49	49	60	2940	11,54
	4	49	49	84	4116	16,16
	5	49	12	371	4452	17,47
	6	49	12	419	5028	19,73
	7	49	9	401	3609	14,17
	8	49	9	449	4041	15,86
Total+10%:					144,62	
ES:					144,62	
TOTAL:					144,62	

NOTAS:

1 - COTAS EM cm, ELEVAÇÕES EM m, SALVO INDICAÇÃO CONTRÁRIA.

CONTRATANTE: FUNASA - Fundação Nacional de Saúde

PROGRAMA: Programa de Aceleração do Crescimento - PAC 2

MUNICÍPIO: CORAÇÃO DE JESUS - MG

TÍTULO: SISTEMA DE ABASTECIMENTO DE ÁGUA PROJETO ESTRUTURAL

BASES E CAIXA DE MANOBRA - FORMA E ARMAÇÃO

OUTUBRO/2013

INDICADA: 01

CONTRATADO: DESPRO

RESP. TEC.: ALBERTO OLIVEIRA CHAVES

REG. CREA: 687850

SUPERINTENDÊNCIA ESTADUAL DE MINAS GERAIS

Direção de Engenharia de Saúde Pública